

# Mobile Monoplace Clinical Hyperbaric Facility

Reimers Systems, Inc  
8210-D Cinder Bed Road  
Lorton, VA 22079  
Phone: 703-952-0240  
Email: [Info@ReimersSystems.com](mailto:Info@ReimersSystems.com)

## Applicable Rules

NFPA 99-2005, Chapter 20 "Hyperbaric Facilities"  
ASME-PVHO-1 "Safety Code for Pressure Vessels for Human Occupancy"  
AIA Guidelines for Mobile Medical Facilities

## Chambers

Can Be Used with Most Monoplace Chambers Up to 42" Width

# Easy Transport and Setup

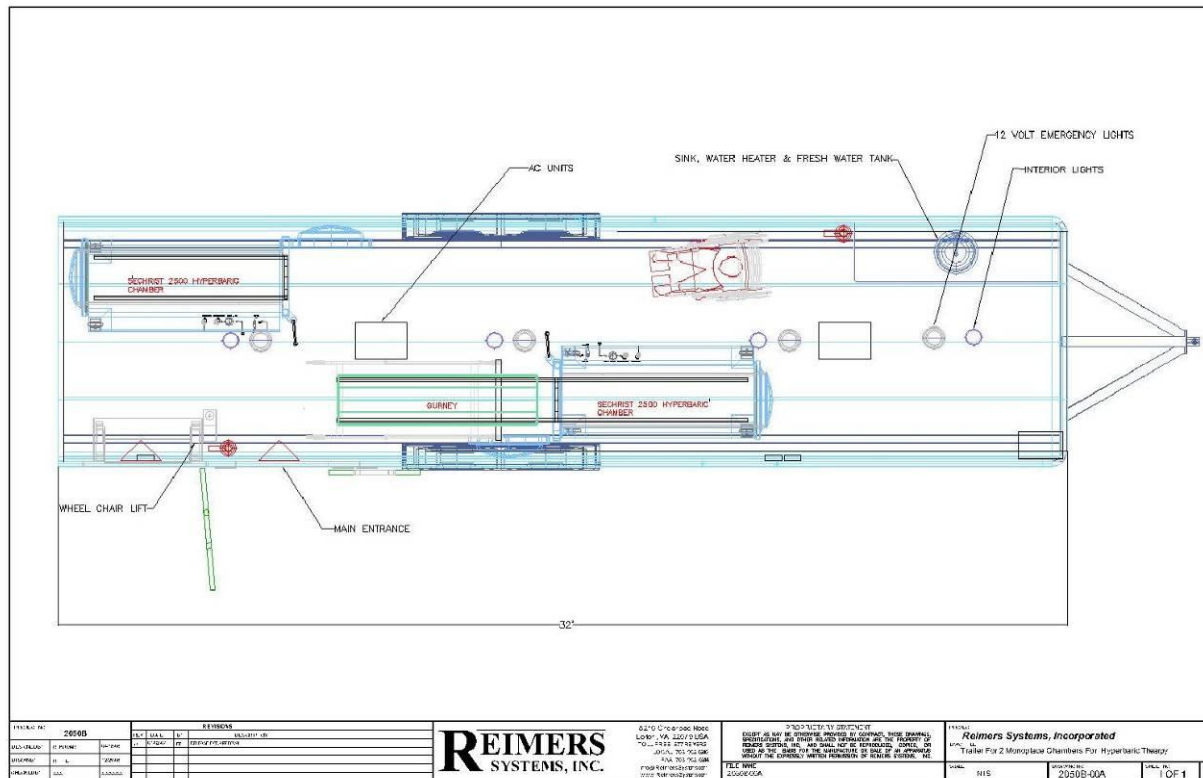
Transport to Site



Quick  
Set-up  
On-Site



# Mobile Monoplace Facility: Floor Plan



# Interior with Two Sechrist 2500B Chambers and Oxygen Manifold



# Interior with Two PAHI Chambers and Oxygen Manifold



# **Interior with One Sechrist 2500B and One Sechrist 3200 Chamber Equipped with RSI TV System**



# Access Options: Doors & Patient Lift



# Access Options: Ramp for Gurney Access through Rear Doors



# Initial Operational Location, S/N 1



# Initial Operational Location, S/N 2 Hutchinson Hospital, Hutchinson, KS



# Initial Operational Location, S/N 2 Hutchinson Hospital, Hutchinson, KS



Chamber shown is a Sechrist 2500B chamber  
equipped with RSI chamber TV system.

# Treatment in Progress



# On Location, Santa Ana Pueblo, New Mexico



# Ready for Treatment Operations, St. Johns, Newfoundland



# Treatment in Progress, St. Johns, Newfoundland





External  
Portable  
LOX Tanks  
(used when  
piped  
oxygen is  
not  
available)